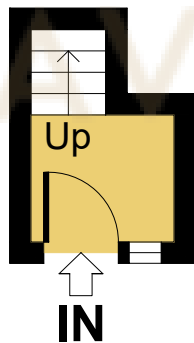
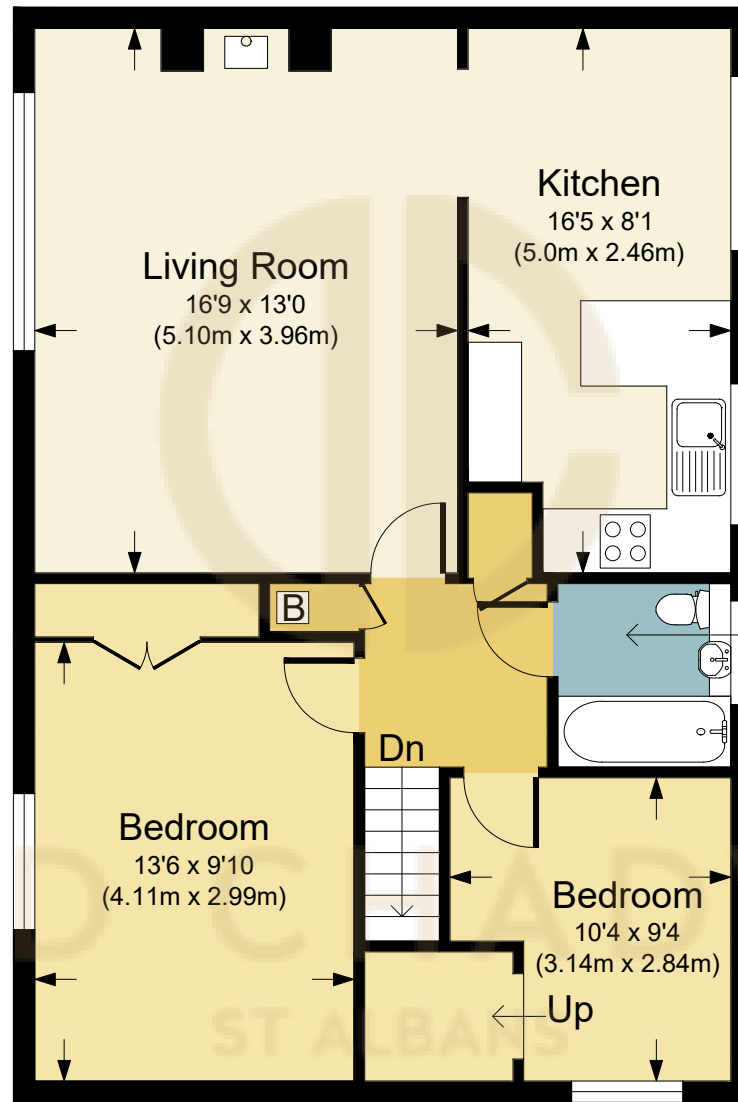


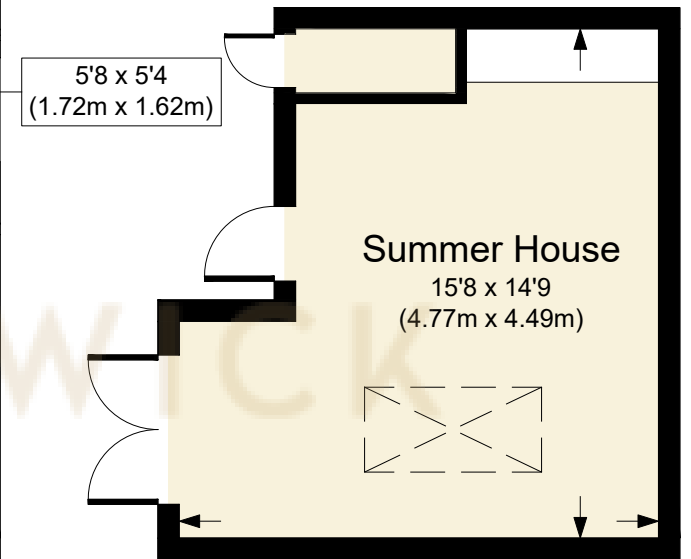
Garage



Raised
Ground Floor



First Floor



Summer House

HAZELWOOD DRIVE, AL4

APPROX. GROSS INTERNAL FLOOR AREA 1058.95 SQ FT / 98.38 SQ M. INC. GARAGE & SUMMER HOUSE

DAVIDCHADWICK: THIS IMAGE IS ILLUSTRATIVE ONLY - NOT TO SCALE: COPYRIGHT:THE IMAGE TAILOR LTD. 2024.